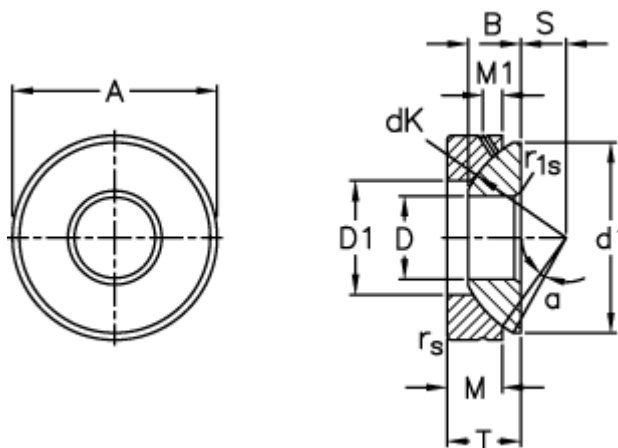


Article number: 03511045

Description: Fluro Rod end GE 45AX

## Measures



A	= 120 0 -0,015	M1	= 11
B	= 31	rs, r1s min	= 1
D	= 45 0 -0,012	S	= 27.5
d1 max	= 110	Static axial load C0 (kN)	= 2450
D1 min	= 67	T	= 36,5 +0,25 -0,40
dK	= 128	Tilt angle	= 6
Dynamic axial load C (kN)	= 490	Weight	= 2240
M	= 25.5		